



The **Levelese Corrosive Service Level Sensor-Transmitter** has been specifically designed for highly corrosive service applications, such as concentrated acids or caustics in moist, salt atmospheres.

Features include:

- Inert Engineered Plastic Body
- NEMA4X Dual Compartment Electronics & Terminal Block Enclosure
- Viton[®], HDPE, 316 SS & Ceramic Wetted Parts
- 4" NPT or Flange Connection

Levelese continuous level monitors are:

- Easy to install and maintain
- Highly reliable
- Without moving parts
- Possess wide rangeability from 5 in to more than 166 ft
- Demonstrate negligible sensing errors
- Operate in explosive, corrosive and extreme environments
- Independent of product

HOW IT WORKS

Using the principle of buoyancy the **Levelese** level measuring system weighs an inert chain, secured below the fluid surface and determines the inverse of liquid level and converts it to an analog or digital electronic signal for indication, alarming or continuous or on-demand transmission.



Applications:

- Concentrated acids and caustics
- Sour Crude Production Tanks
- Chemical Tanks

Specifications:

- Level Ranges: 6 inches to 166 ft
- Ranges: 0-5 Ft to 0-166 Ft
- Suppressed Zero Ranges (Absolute depth of fluid does not affect the measured range)
- Materials of construction: PVC, CPVC, Polycarbonate, Viton[®], Stainless steel, HDPE
- Dual compartment polycarbonate housing, NEMA4X, with sealed and separate terminal enclosure
- Mounting: 4" NPT/150# FF Flange
- Accuracy: Better than $\pm 0.15\%$ FS
- Linearity: Better than 0.98% FS
- Hysteresis: Better than 0.03% FS
- Temperature range: -30 to +65°C
- Power required, various for application
 - a) 8 VDC (min) @22 mA for transmitters
 - b) 117 VAC, 24 VDC w/Displays
 - c) Rechargeable batteries
- Output/Display
 - d) 4-20 mA, 8 V Excitation
 - e) HART[®], Fieldbus[®] wireless & smart transmitters
 - f) Wireless
 - g) Bargraph w/3 Digit Display
 - h) 1/2 Digit LCD Display
 - i) Multi-point SCADA, Graphic

Accessories:

- Stilling Wells & Mounting
- Accessories
- 100W Pt 385 RTD
- IS Certification for Class I, Div 1, Groups C&D



LEVELESE, Inc
 326 Steele St
 Denver, CO 80206
 Tel: 303-586-1425
sales@levelese.com
 © May 15, 2009

SPECIFICATIONS

Specifications:

Level Ranges: 6 inches to 166 ft

Ranges:

0-16 Ft

0-33 Ft

0-83 Ft

0-166 Ft

Suppressed Zero Ranges

(Absolute depth of fluid does not affect the measured range)

Materials of construction: Materials of construction: PVC, CPVC, Polycarbobinate, Viton, Stainless steel, HDPE

Accuracy: Better than $\pm 0.15\%$ FS

Linearity: Better than 0.98% FS

Hysteresis: Better than 0.03% FS

Temperature range: -30 to +65°C

Power required,

- 12 Vdc @22 mA for transmitters

- 117 VAC, 24 VDC w/Displays

- Rechargeable batteries

Output/Display

4-20 mA

HART, Fieldbus, hard wired or wireless analog & smart transmitters,

Modbus, Ethernet

Bargraph w/3 Digit Display

4 ½ Digit LCD Display

Multi-point SCADA, Graphic

Accessories:

100W Pt 385 RTD

Stream Mounting Kit

XP or Intrinsically Safe Certification

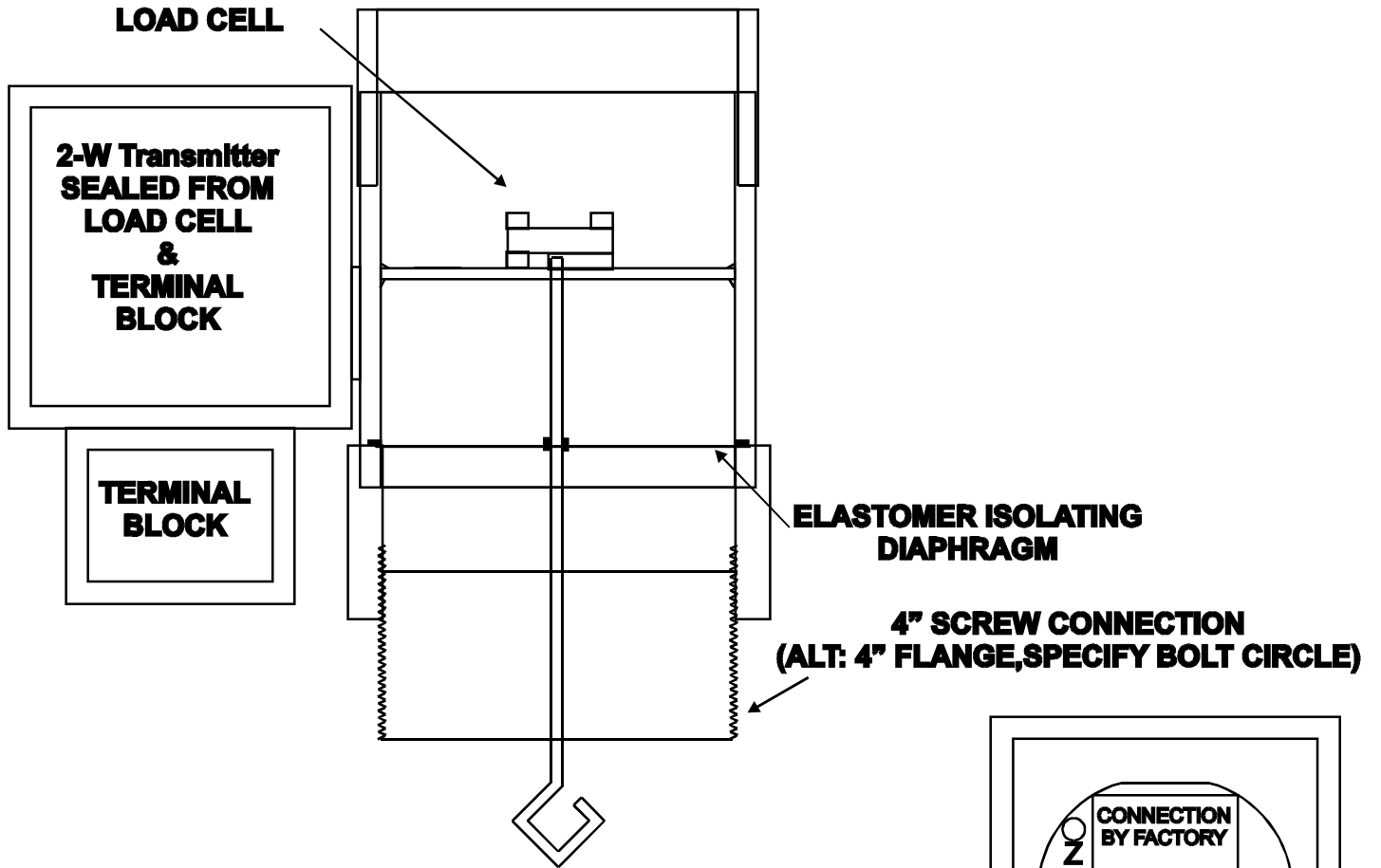
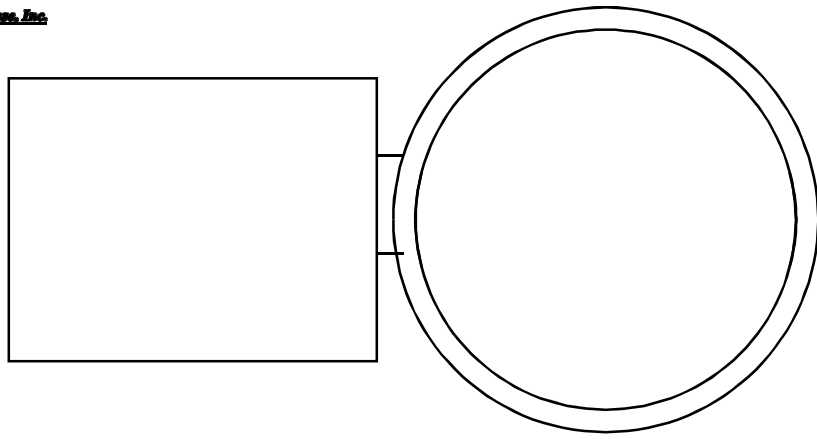
IS level systems,

Class I, Div 1, Groups C&D

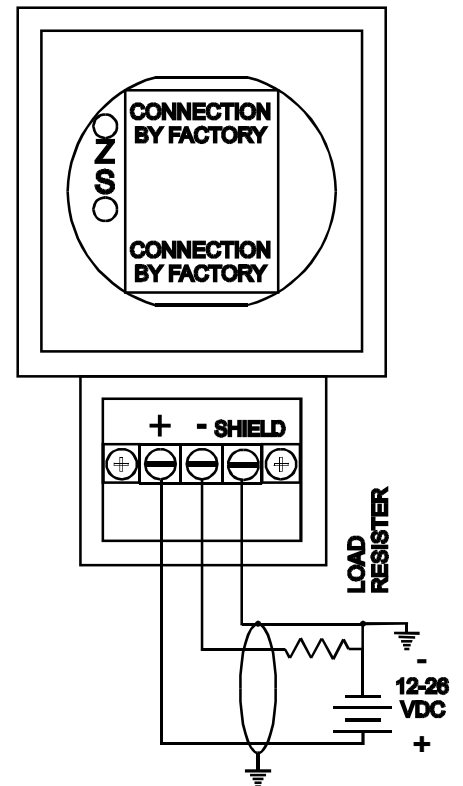
HOW TO ORDER

| | Body | Output | IS | Power | Mounting | Calibration | Description |
|-----------------------|----------|--------|----|-------|----------|-------------|--|
| Levelese Level Sensor | 0 | | | | | | Levelese liquid level instrument, complete with 1-1/2" HDPE chain, 4" NPT Mounting Fitting, Low Copper Aluminum Body, Integral XP, NEMA 4 Electronics Enclosure. |
| | | | | | | | Accuracy: Better than $\pm 0.15\%$ FS |
| | | | | | | | Linearity: Better than 0.98% FS |
| | | | | | | | Hysteresis: Better than 0.03% FS |
| | | | | | | | Temperature Range: -30 to +65 Deg C |
| | 1 | | | | | | Other Materials or Pressure Ratings |
| | 13 16 SS | | | | | | 316 Stainless Steel Body & Parts, ADD..... |
| | 1PVC | | | | | | PVC Body, 316 SS Chain Attachment, Viton Diaphragm Seal, Integral NEMA4X Polycarbonate Dual-Compartment Electronic Enclosure. |
| | | 0 | | | | | 2-Wire 4-20 Integral Analog 4-20 mA Transmitter, 12-26 VDC |
| | | 1 | | | | | 1200 Ohm Load Cell, 5-12 VDC Excitation, 2 mV/V Output |
| | | 2 | | | | | MODBUS™ Transmitter...ADD |
| | | 3 | | | | | HART™, FIELDBUSS Smart 2-Wire Transmitter...ADD |
| | | 4 | | | | | 900 GH Wireless Transmitter...ADD |
| | | | | | | | 2.4 GH Wireless Transmitter...ADD |
| | | | | 0 | | | 12-24 VDC Regulated Power Supply (by Others) |
| | | | | 1 | | | 117 VAC Power Supply, External, for 6 Sensors |
| | | | | 2 | | | Rechargeable batteries in Enclosure on Sensor |
| | | | 0 | | | | Standard Integrally Mounted Single Compartment Enclosure, XP for Class 1, Div 2, |
| | | | 1 | | | | NEMA4X Comosive Service, Dual Compartment Enclosure |
| | | | 2 | | | | XP, Dual Compartment Enclosure, for Class 1, Div 2, Groups |
| | | | 3 | | | | Certified XP Enclosure for Class I, Iv 2, Groups B, C, D...ADD |
| | | | 4 | | | | Certified XP or IS for Class I, Div1, Groups C & D...ADD |
| | | | | | 0 | | Standard 4" NPT Screw Mounting |
| | | | | | 1 | | Low-Pressure (150 psi) Aluminum Pipe Flange Fitting 4" Pipe Size X 9" OD...ADD |
| | | | | | 2 | | Low-Pressure (150 psi) Aluminum Pipe Flange Fitting 6" Pipe Size X 9" OD...ADD |
| | | | | | 3 | | Low-Pressure (150 psi) Aluminum Pipe Flange Fitting 8" Pipe Size X 9" OD...ADD |
| | | | | | 4 | | Other Materials or Pressure Ratings |
| | | | | | 0 | | 2 Point Level Standard Calibration in Water |
| | | | | | 1 | | 3 Point Level Calibration in Water |
| | | | | | 2 | | 5 Point Level Calibration in Water |
| | | | | | 3 | | Other Calibration |

LEVELESE, INC.
326 STEELE ST.
DENVER, CO 80206
TEL: 303-586-1425
WWW.LEVELESE.COM



ALTERNATE FLANGE MOUNTING
 1. 9" OD X 1" THICK, 4" NPT PIPE THREAD
 2. 7 1/2" BOLT CIRCLE FOR 8 5/8" BOLTS



LEVELSE-1-0-0-0-4P-0
 Description: (NEMA4X) CORROSIVE SERVICE

These drawings and specifications contain information proprietary to Levelless, Inc. and are issued in strict confidence. As the property of Levelless, Inc., these drawings and specifications shall not be reproduced, disclosed to others or used as the basis for the manufacture or sale of goods without prior written consent of Levelless, Inc. The date shown on this drawing is the copyright date.

Drawn By: SAO

Date: 04-16-09

Checked by:

Phone: 908-686-1486